

Technical Papers

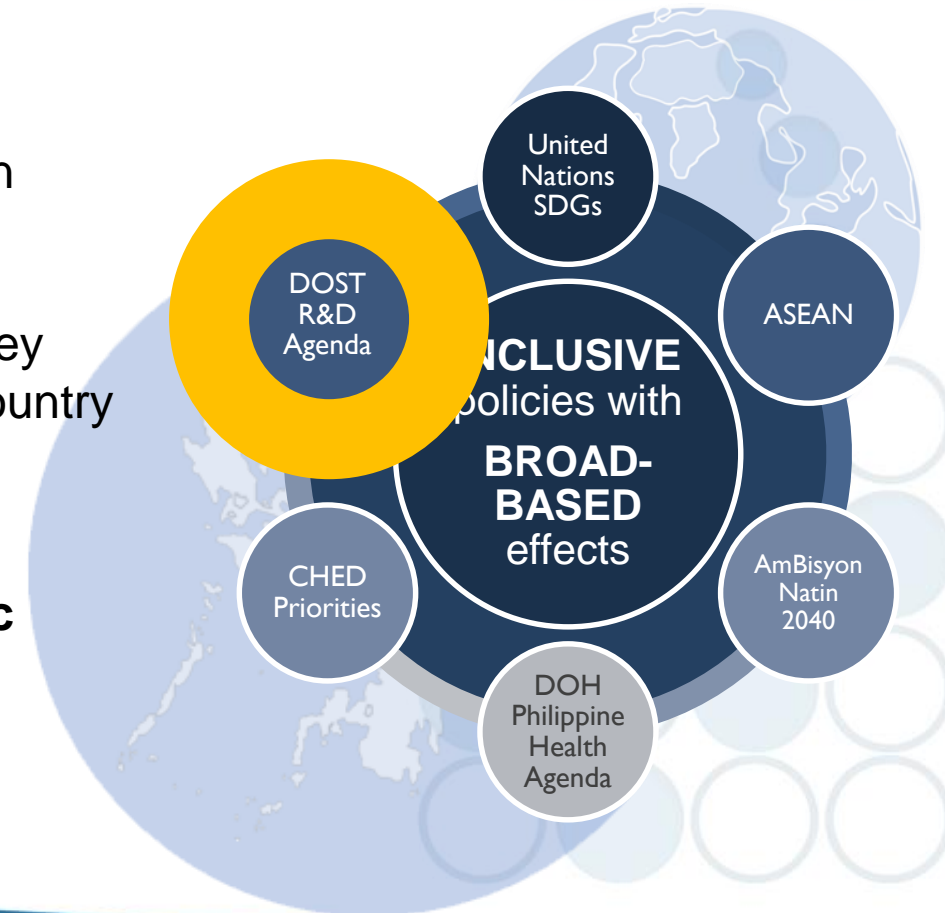
Philippine Directions in Socioeconomic Development and Health for 2017-2022

J Salisi and J Orano

Policy and Agenda Driving Health Research

- Global and national policies, cutting across socioeconomic development and health, affect Philippine agenda for health research

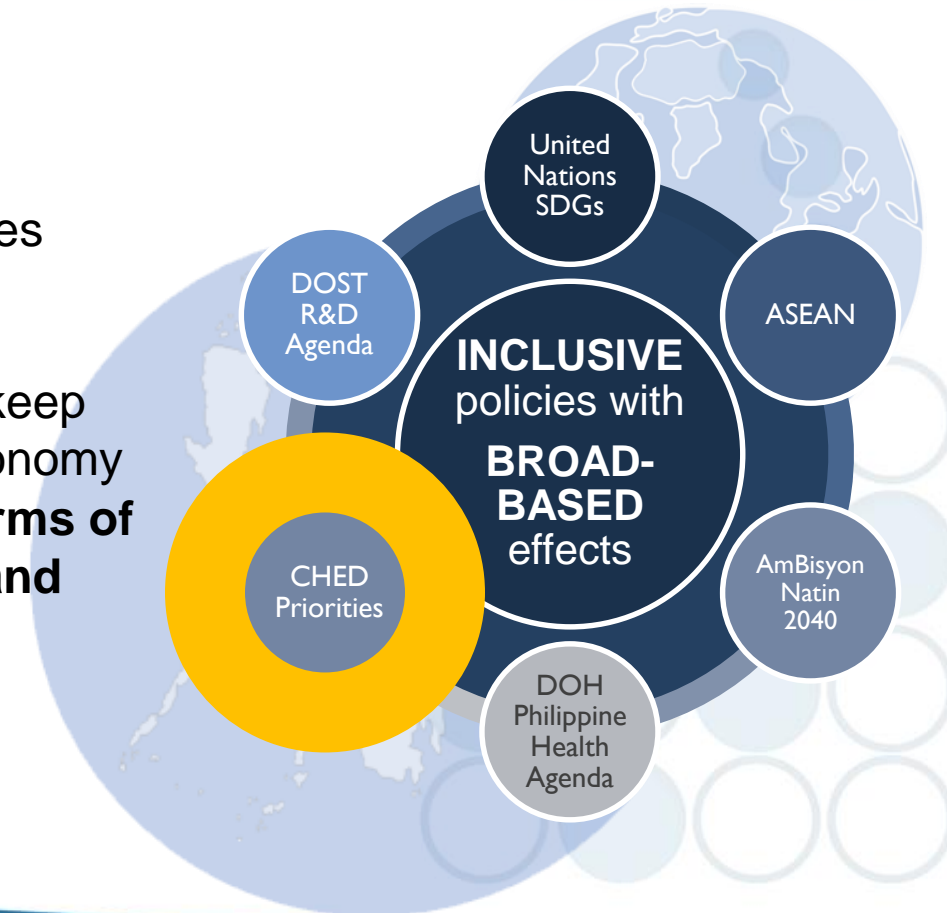
- Allocation of Php 5.8 billion for research and development
- Health as one of the five key areas of research in the country
- **National Research and Development Agenda**
- **National Integrated Basic Research Agenda**



Policy and Agenda Driving Health Research

- Global and national policies, cutting across socioeconomic development and health, affect Philippine agenda for health research

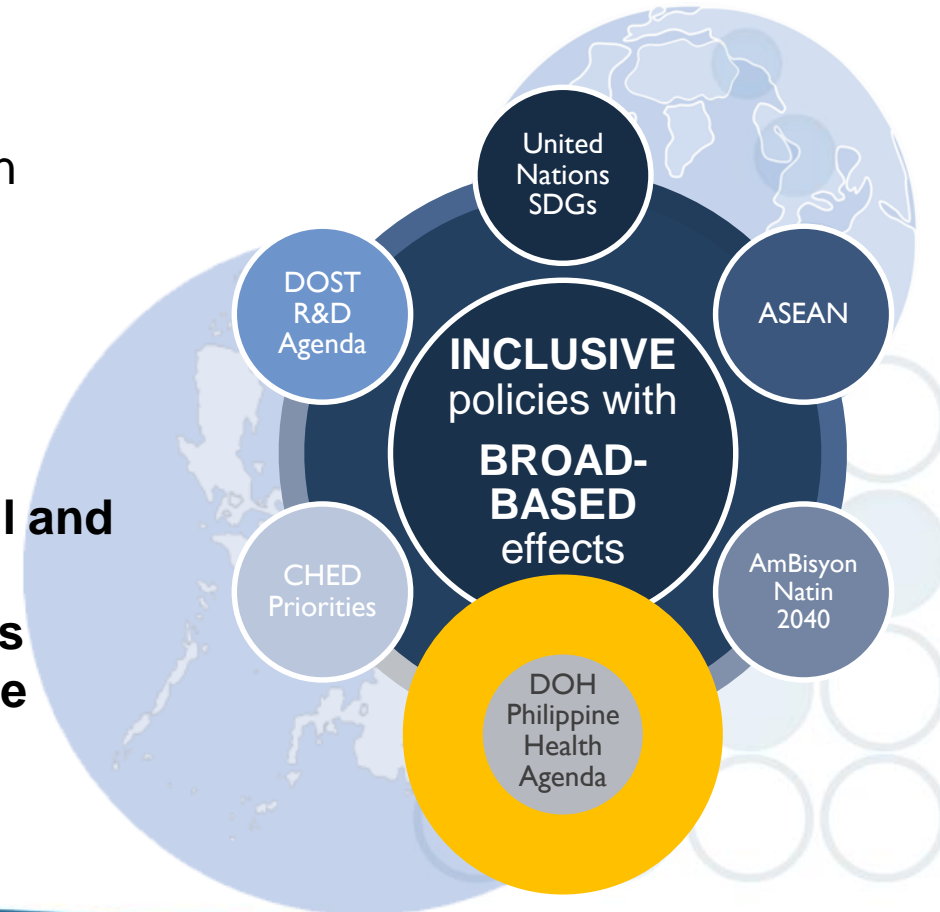
- Acknowledges gains in producing college graduates in recent years
- Emphasizes quality over quantity, and the need to keep up with the knowledge economy
- **Quantity measured in terms of research, development and innovation**



Policy and Agenda Driving Health Research

- Global and national policies, cutting across socioeconomic development and health, affect Philippine agenda for health research

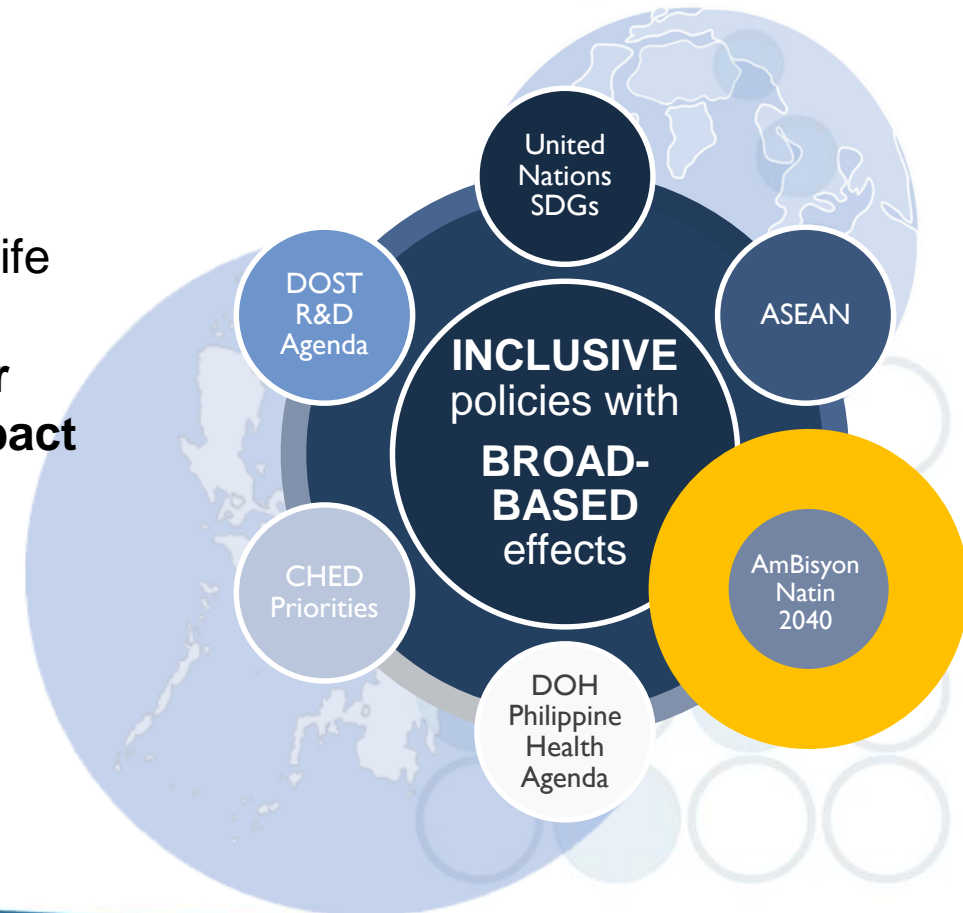
- Aims for best health outcomes for all, promotion of health and delivery of healthcare, and the protection of all families, especially those who are financially vulnerable
- **Services for both the well and the sick**
- **Service delivery networks**
- **Universal health coverage**



Policy and Agenda Driving Health Research

- Global and national policies, cutting across socioeconomic development and health, affect Philippine agenda for health research

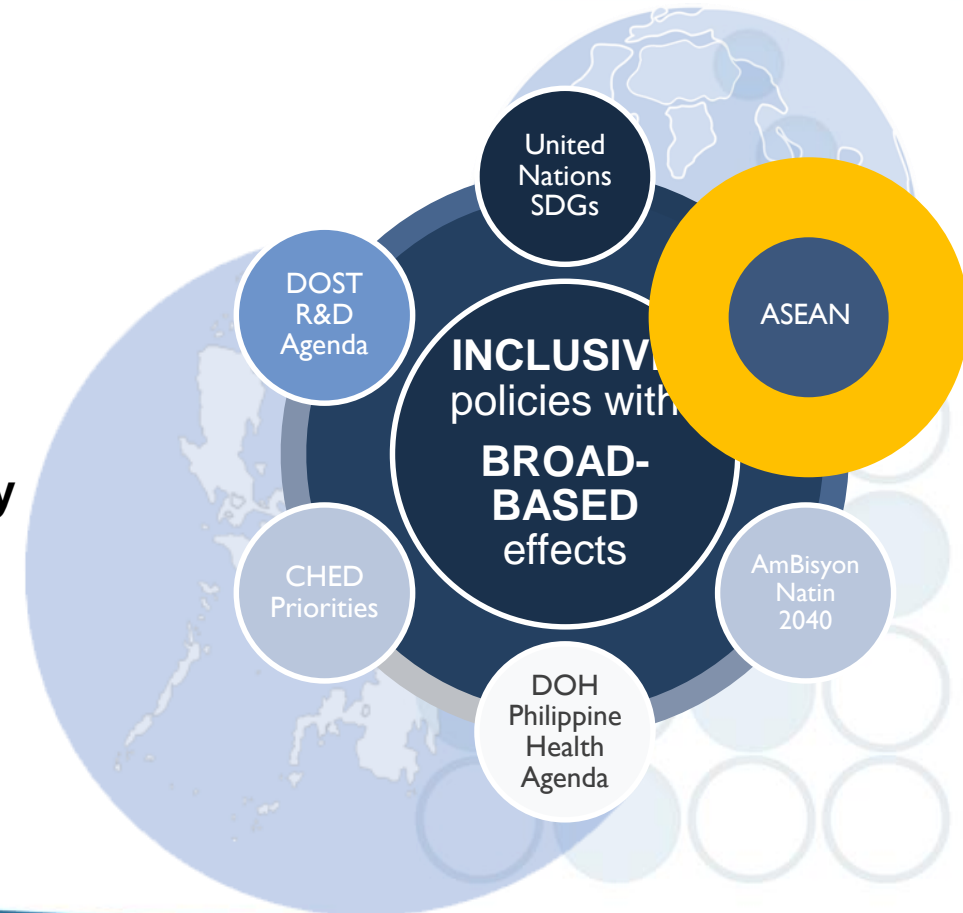
- A simple and comfortable life for the average Filipino
- **Health is a priority sector seen to have a direct impact on AmBisyon**
- ***Matatag, maginhawa at panatag***



Policy and Agenda Driving Health Research

- Global and national policies, cutting across socioeconomic development and health, affect Philippine agenda for health research

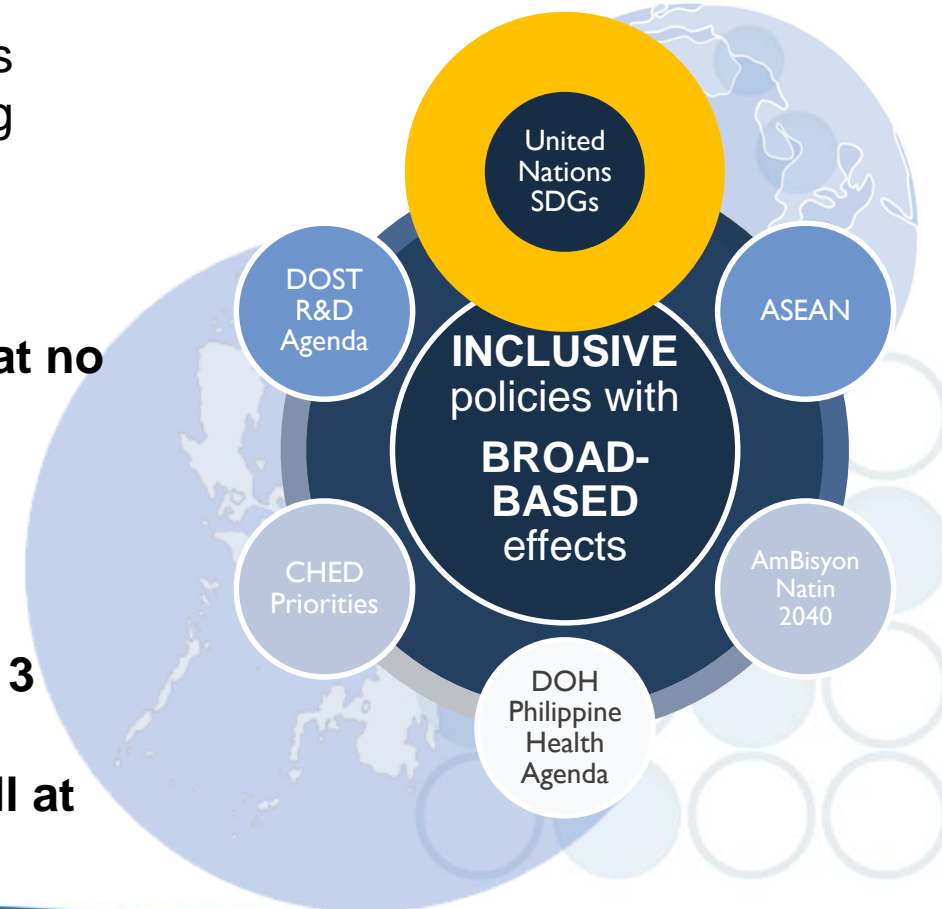
- Integration among ASEAN member states
- **Economic Community Blueprint**
- **Sociocultural Community Blueprint**
- Political-Security Blueprint



Policy and Agenda Driving Health Research

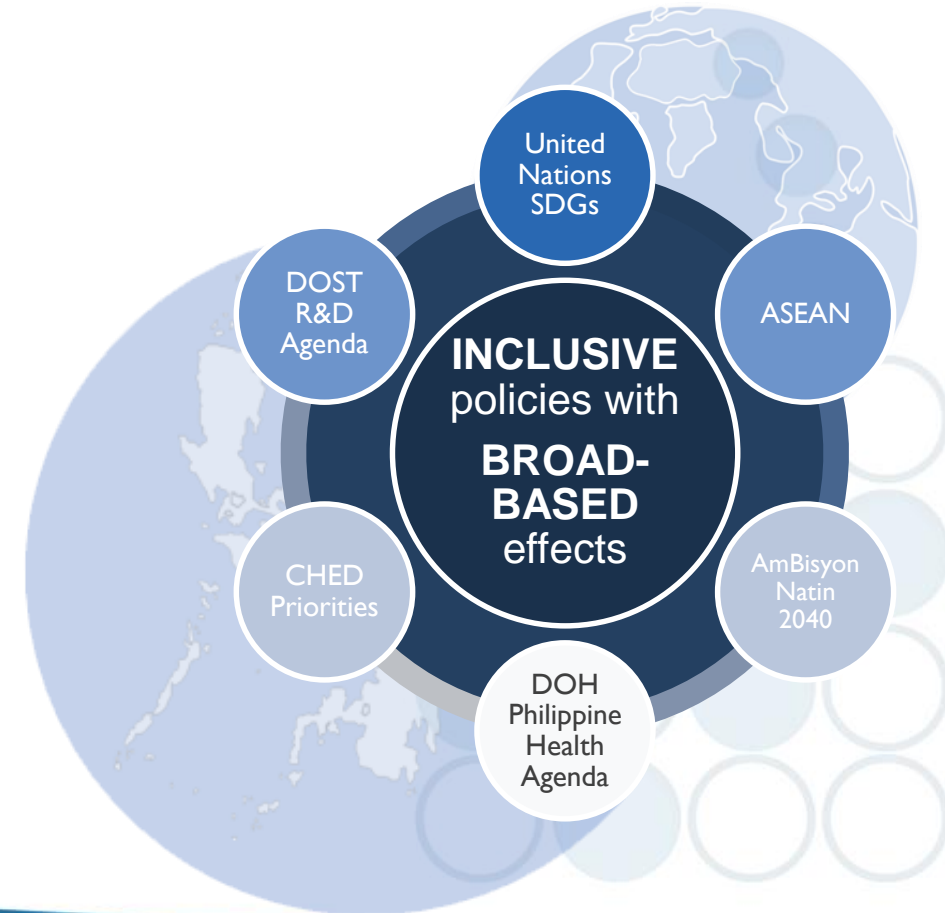
- Global and national policies, cutting across socioeconomic development and health, affect Philippine agenda for health research

- Success of previous MDGs predicated upon the setting of targets
- **Focus on People, Planet, Prosperity, Peace and Partnership to ensure that no one is left behind**
- 17 goals and 169 targets
- WHO: emphasis on health monitoring on one comprehensive goal: **SDG 3**
- **Ensure healthy lives and promote well-being for all at all ages**



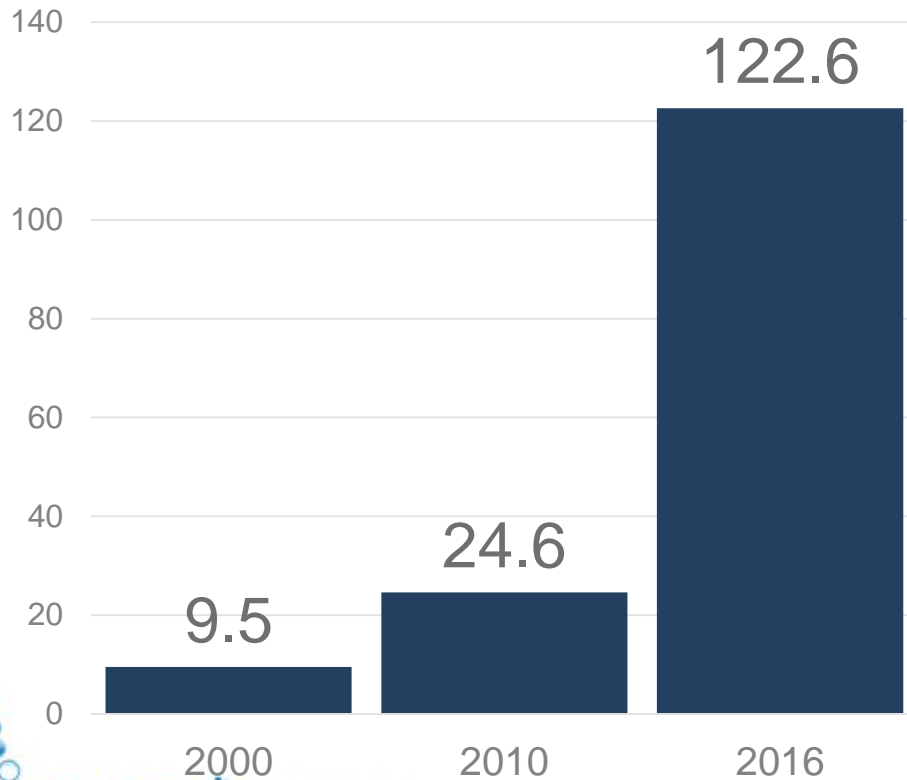
Policy and Agenda Driving Health Research

- Global and national policies, cutting across socioeconomic development and health, affect Philippine agenda for health research



Health Systems Milestones from 2010 - 2016

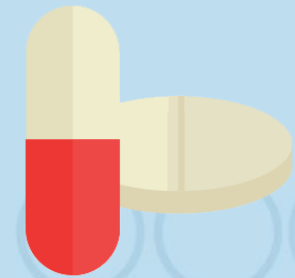
DOH Budget, in billions



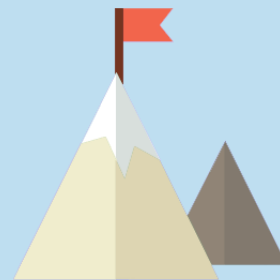
Achievements of *Kalusugang Pangkalahatan*



Healthcare facility
construction and
expansion



Access
to
medical
products



1
Attention
to GIDAs



Human
resources
for health

Health Systems Milestones from 2010 - 2016

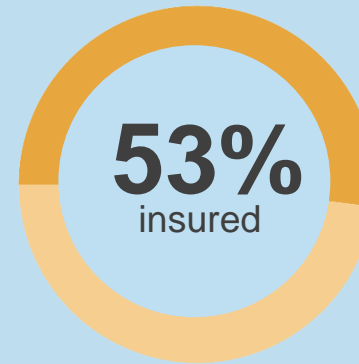
Pantawid Familyang Pilipino Program

4Ps

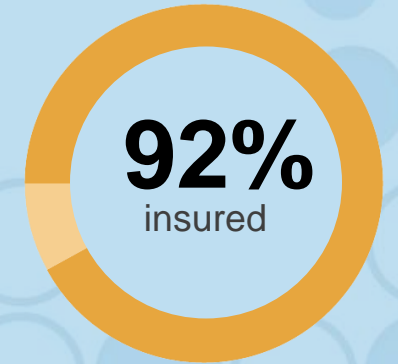
- Improved children's nutrition
- Changed parenting practices
- Motivated health spending
- Stimulated healthcare access



PhilHealth coverage



2010



2016

Previous experience in the Philippines: ENHR Model

- Developed with the Council on Health Research for Development (COHRED)

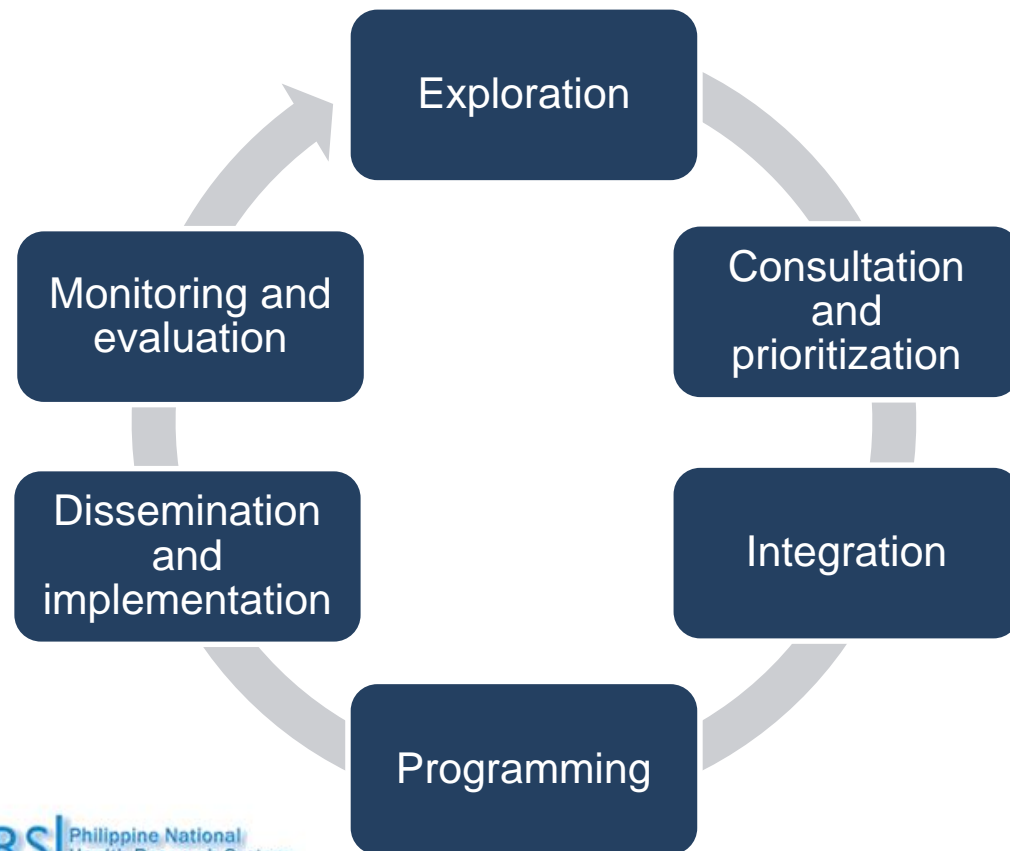


Agenda Setting with the Kingdon Model



- Multiple streams align to inform public policy
- When aligned, a window of opportunity arises to introduce issues into the agenda
- Adapted to show that there are more than one entry point to elevate an issue into the agenda

Agenda Setting with the Dialogue Model



- Emphasizes the people component of agenda setting
- The addition of **monitoring and evaluation** is an adaptation in the paper
 - Mirrors the research cycle
 - Ensures the implementation of the research agenda
 - Addresses previously identified weaknesses in the NUHRA 2006-2010 and NUHRA 2011-2016

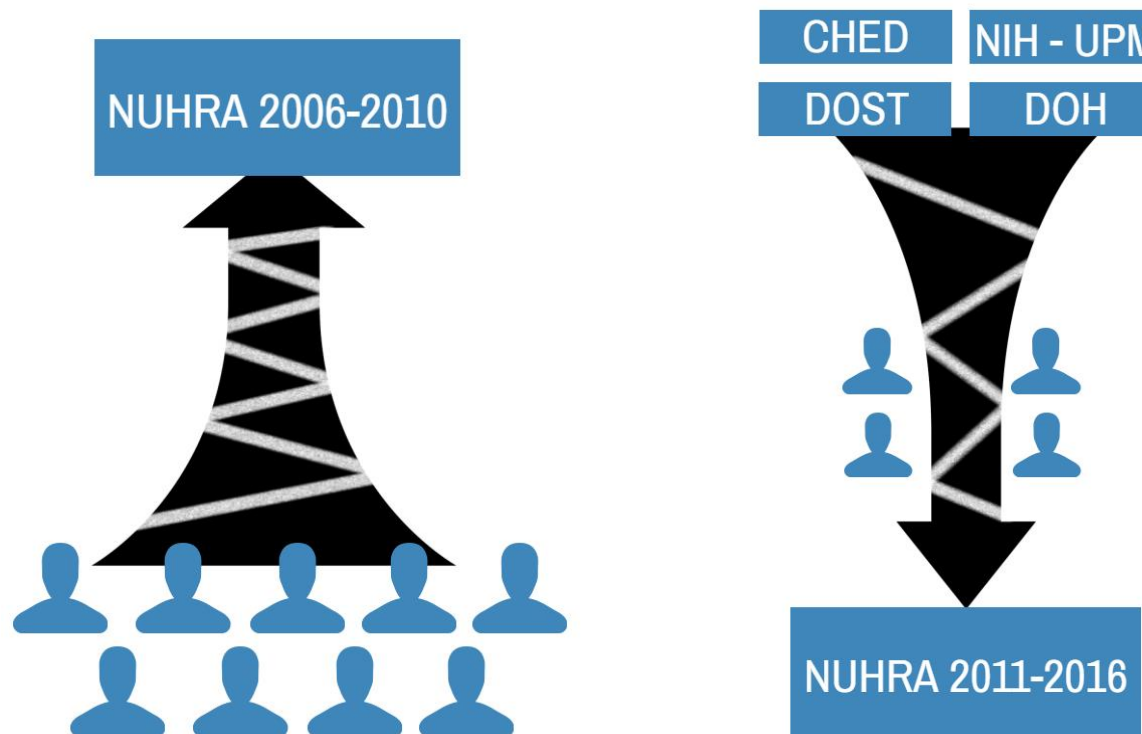
Towards a Relevant and Responsive Health Research System

JF Lopez

T Dizon

Does the NUHRA reflect the country's health needs?

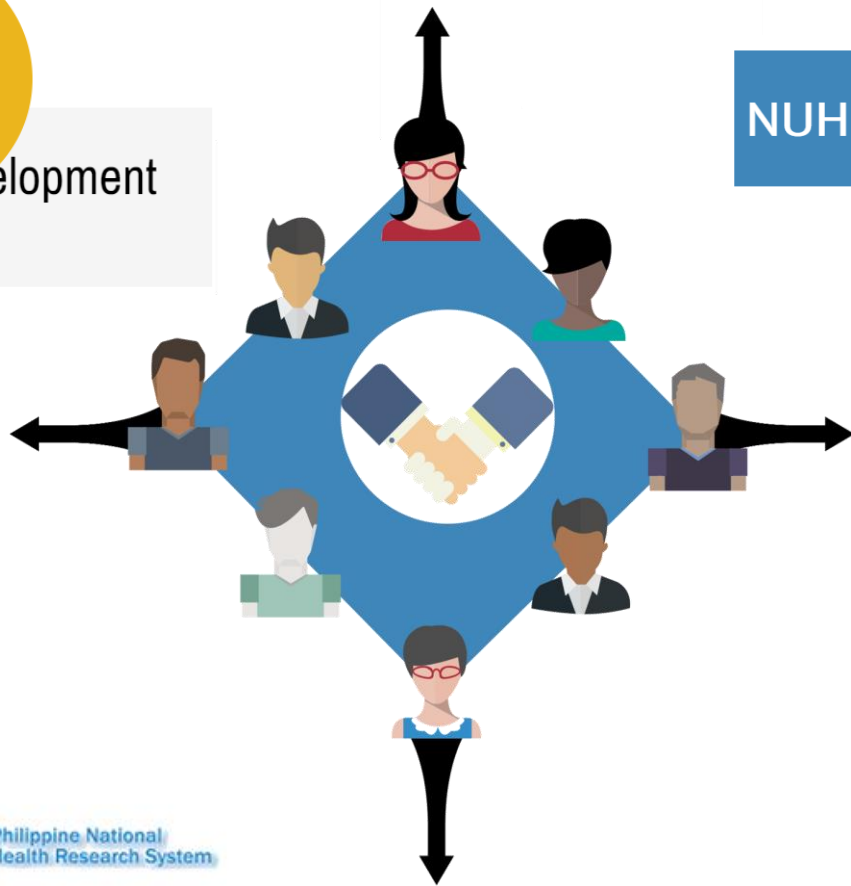
- Identifying the country's health needs requires multistakeholder processes



Does the NUHRA reflect the country's health needs?



NUHRA development requires



NUHRA 2017-2022

Adequate representation and consensus-building among stakeholders and horizontal and vertical approaches for **integration**

Does the NUHRA influence research done in the Philippines?

NUHRA 2006-2010

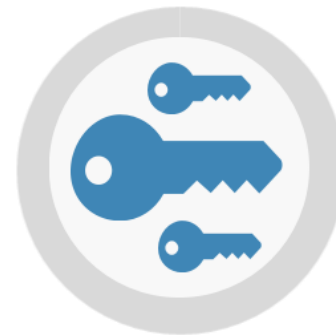
Bottom-up approach

422
research priorities
14%
completed

NUHRA 2011-2016

Top-down approach

56
research priorities
80%
completed



Access to funding and health research completion are highly related.

Does the NUHRA influence research done in the Philippines?

NUHRA 2006-2010

Bottom-up approach

422

research priorities

14%

completed

NUHRA 2011-2016

Top-down approach

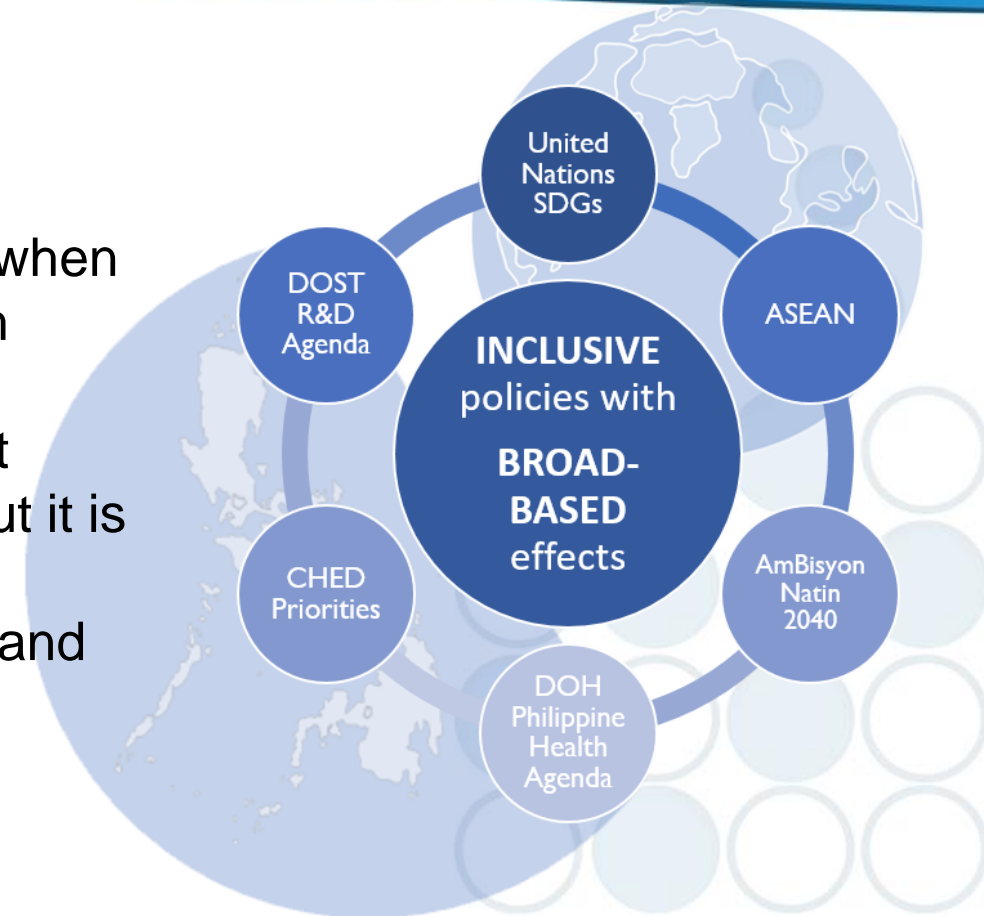
56

research priorities

80%

completed

Funding is accessible when aligned with national government priorities, but it is subject to challenges and delays.



Does the NUHRA influence research done in the Philippines?

NUHRA 2006-2010

Bottom-up approach

422

research priorities

14%

completed

NUHRA 2011-2016

Top-down approach

56

research priorities

80%

completed

Global partnerships and inter-organizational collaboration provide other options.



Does the NUHRA influence research done in the Philippines?



NUHRA development requires

Health information integration



Research proposal approval streamlining

Capacity building for regions, individual researchers and end-users



Does the country have the capacity to translate research into policies and actions that respond to our health needs?

- Some factors that hinder the country's capacity to translate research:



Absence of a monitoring system for research utilization



Agency-related difficulties in research translation



Does the country have the capacity to translate research into policies and actions that respond to our health needs?



NUHRA development requires a framework for evaluating research utilization



A 20/20 Vision for the Philippines

L Klingel
Y Zuniga

What defines the landscape in the future of the Philippines?

- Non-communicable diseases and the aging community
- Expansion of the private sector
- Policy developments
- Decentralization



Shimada et al. Medicines Act

What are the next steps to achieve our vision for the Philippines in 2040?

- Rethinking primary care models to address NCDs
- Investment in human and intellectual capital
- Ensure better health services in federalism
- Collaboration among government, private sector and civil society



What are the dreams and aspirations of the average Filipino for 2040?

AMBISYON
NATIN 2040

A SIMPLE and COMFORTABLE LIFE of the AVERAGE FILIPINO for 2040?

P 120,000 gross monthly income

P 25,000 for income tax

P 4,000 relaxation with family & friends

P 40,000 day-to-day needs

P 6,000 personal trips

P 5,000 one car

P 30,000 medium-sized house

P 10,000 to afford to have children in COLLEGE

Uncertainties

- Are we equipped with the right tools to tackle the problems presented?
- Are we on the right direction in attaining the 2030 SDGs and the AmBisyon Natin 2040?
- Will federalism maximize the efficiency of government health services, or will it reinforce the fragmentation of the country's health system?

Private Sector Participation in Health Research

KM Magtubo

M Mauricio

The innovation ecosystem for the private sector and other players in health research

PRIVATE SECTOR

Generators

Funders

Adopters

BARRIERS

- Complex processes
- Mismatching funding schemes
- Prohibitive regulatory environment
- Uneven capacities
- Asymmetry in sharing information

BARRIERS

Government

Academe

NGOs

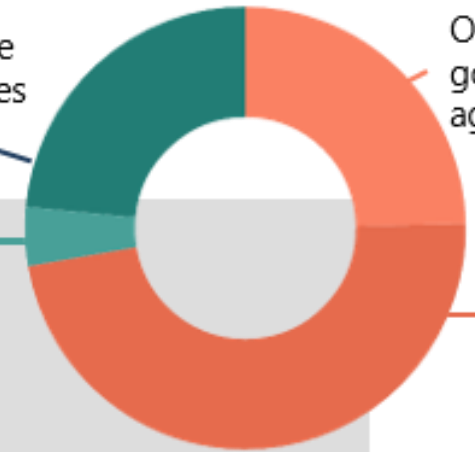
Funding interactions between the private sector and the government

4.7%
PCHRD grants went to
**PRIVATE
BUSINESSES**

Other private sector entities (25.6%)

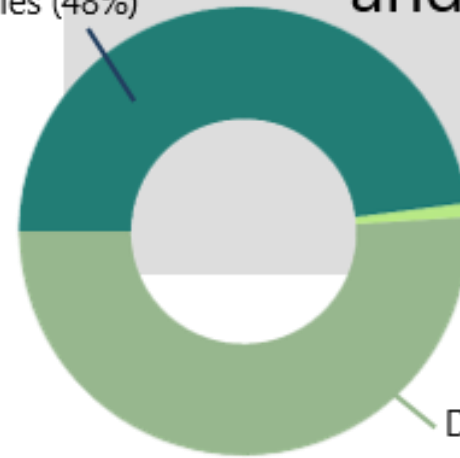
Other government agencies

Public HEIs



Limited **FUNDING** flows between private sector and government

Other government agencies (48%)

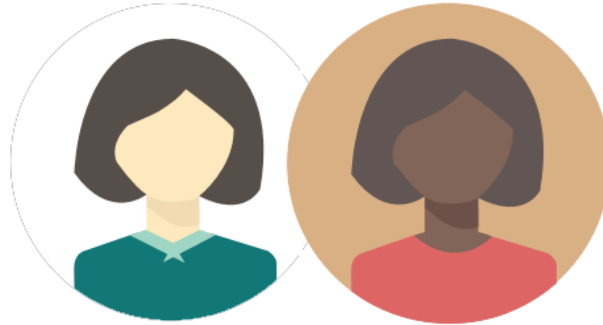


<1% OF
DOST research funding from
PRIVATE SECTOR

Successful Public-Private Partnerships in Health Research



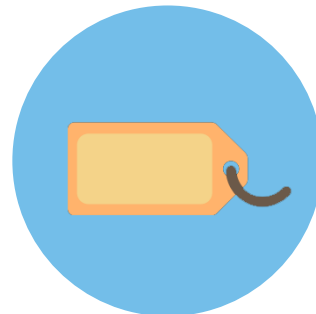
Axis Knee System



Trust and openness between private sector and DOST



Assignment of one liaison person from DOST



Support in getting the product to market



Successful Public-Private Partnerships in Health Research



Sambong



Rigorous studies supporting the development of products



Openness to collaboration



Companies willing to bet early on the product

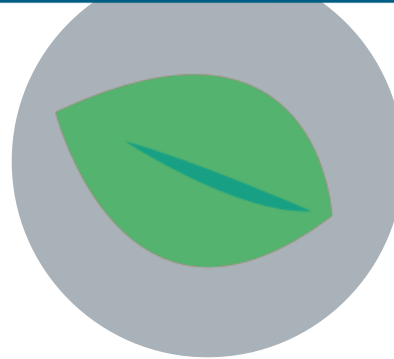


The way forward: Opportunities for collaboration

Drugs and vaccines



Natural products



OPPORTUNITIES
for
COLLABORATION

For the Axis Knee System and sambong, **technology transfer** was the entry point for collaboration between the private sector and public agencies.



Diagnostics



Health information