



“Convergence @ PNHRS”

Convergence, Collaboration Networking and Community Building

Erlinda Castro-Palaganas, Ph.D.



For the Cordillera Regional Health Research
and Development Committee (CRHRDC)

Pan Pacific Hotel, Manila
13-14 August 2008



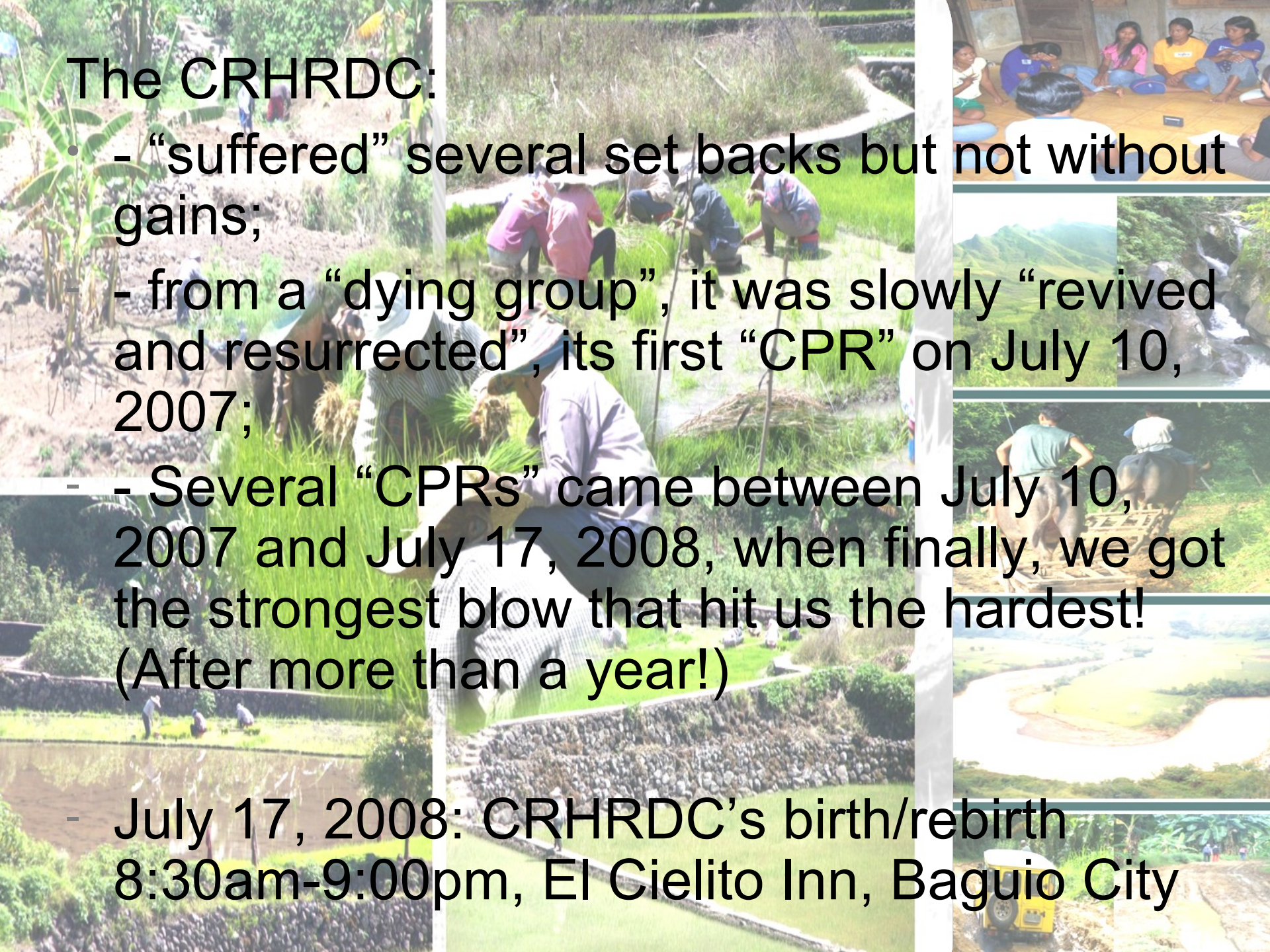
Objective:

Share our (CRHRDC) experiences and/or perspectives on the following:

- - commitment and convergence towards a common agenda and platform;
- - fostering an active sense of community;
- - Sustainability of cooperation; and
- - Outputs of the community or network.

The CRHRDC:

- “suffered” several set backs but not without gains;
- from a “dying group”, it was slowly “revived and resurrected”, its first “CPR” on July 10, 2007;
- Several “CPRs” came between July 10, 2007 and July 17, 2008, when finally, we got the strongest blow that hit us the hardest! (After more than a year!)
- July 17, 2008: CRHRDC’s birth/rebirth
8:30am-9:00pm, El Cielito Inn, Baguio City





The “resuscitating team” includes:

- DOST-CAR
- DOH-CAR
- CHED-CAR
- BGH-MC
- SLU, UB, UC, BSU, UP Baguio
- Fil-Chinese General Hospital

Cordillera Regional Health Research and Development Committee (CRHRDC)

HEALTH SECTOR VISION

Regional Health Vision

Healthy and economically productive individuals and families with universal access to quality health care services in the Cordillera Region.



Cordillera Regional Health Research and Development Committee (CRHRDC)

HEALTH SECTOR VISION

CRHRDC Vision

A responsive, dynamic and ethically responsible health research community ensuring/espousing a participatory and empowering research process.

CRHRDC Mission

To provide, promote and sustain an enabling health research and development framework toward evidence-informed health and health related policies and action working for the attainment of regional and national goals.



Cordillera Regional Health Research and Development Committee (CRHRDC)

CRHRDC Strategic Goals

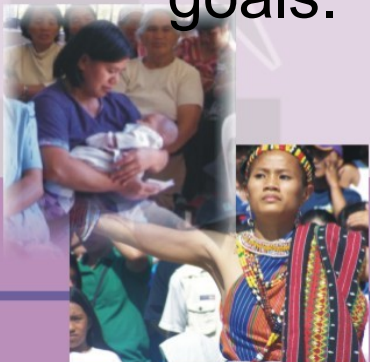
- To develop a regional research system that contributes to equitable health development. To advance knowledge that underpins health and equitable, quality health care.
- To evaluate, monitor and sustain the health research activities in the region.



Cordillera Regional Health Research and Development Committee (CRHRDC)

CRHRDC Strategic Goals

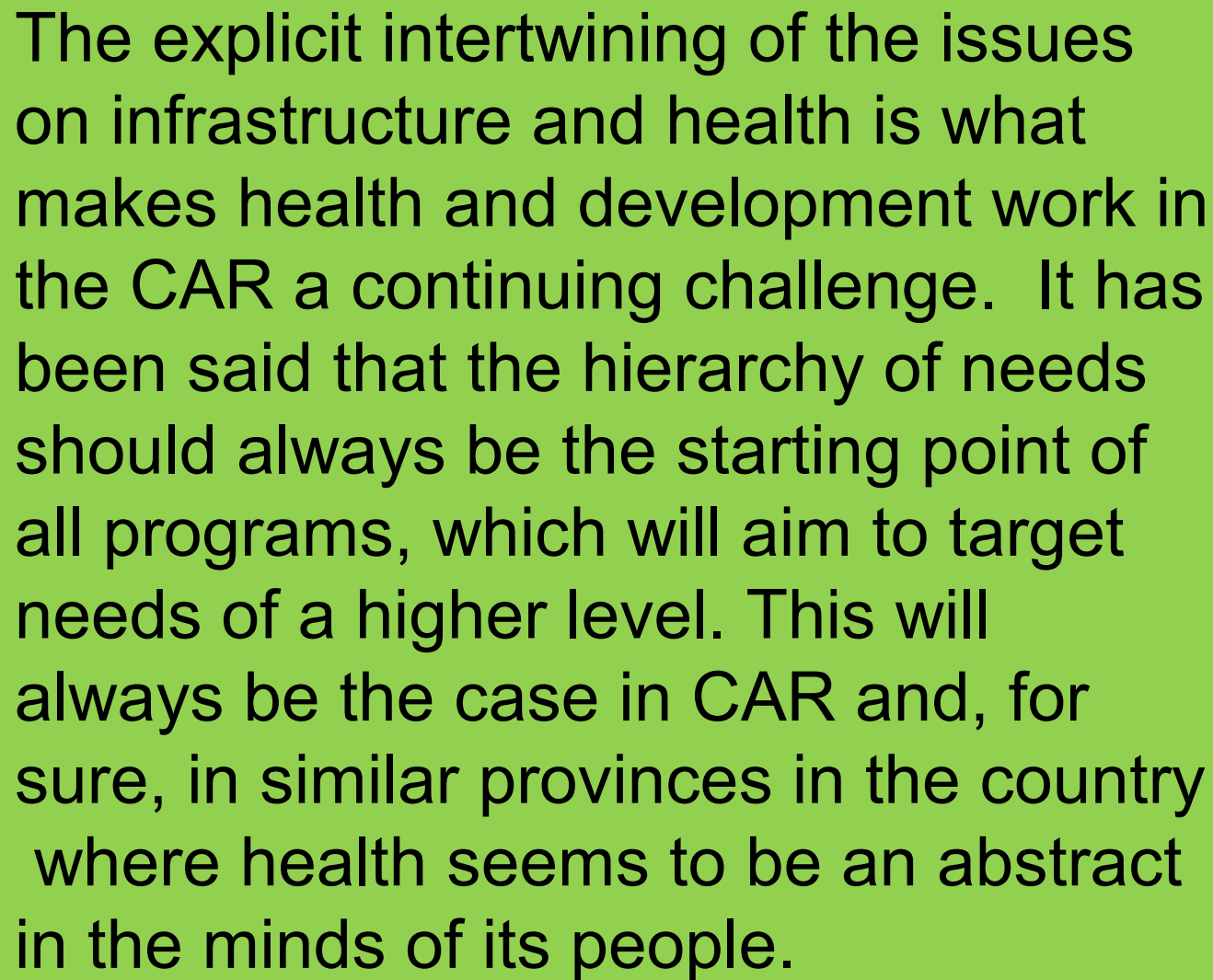
- To institute mechanism for the expansion of membership of the committee.
- To generate and mobilize resources for the regional health research system.
- To establish/strengthen linkages/network with other research consortia to attain regional and national health goals.



Context of research agenda: Rich region in a rich country, poor people

- Rich in natural resources
 - forest resources
 - river/water resources
 - agricultural lands
 - mineral resources
- Physical inaccessibility remains a concern



The background of the slide is a collage of five images. Top left: A dense forest with large trees and hanging vines. Top center: A wide view of a lush green forest. Top right: A yellow vehicle on a dirt road in a tropical setting with banana trees. Middle right: A person with a large backpack standing by a riverbank. Bottom right: A person in a pink shirt standing on a wooden boat on a river. Bottom center: A view of a river winding through a valley. A large green text box is overlaid on the center of the collage.

The explicit intertwining of the issues on infrastructure and health is what makes health and development work in the CAR a continuing challenge. It has been said that the hierarchy of needs should always be the starting point of all programs, which will aim to target needs of a higher level. This will always be the case in CAR and, for sure, in similar provinces in the country where health seems to be an abstract in the minds of its people.

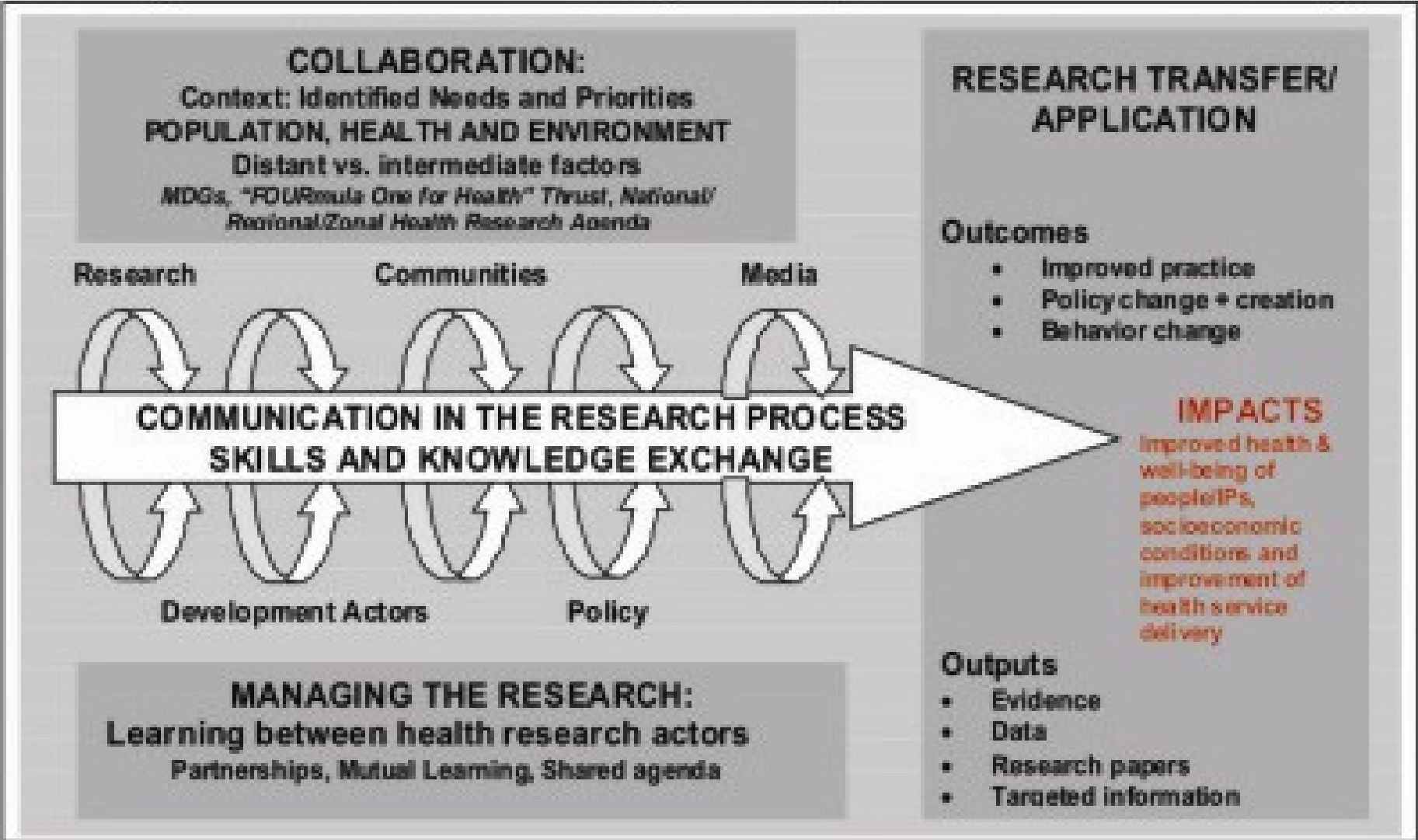
A Problem of G

o Health Services

No Roads Mean No Social Services

Convergence, Collaboration Networking and Community Building

Fig. 1 Framework For Health Research Agenda Setting For The Cordillera Administrative Region



Convergence, Collaboration Networking and Community Building

Role of Research

Research provides the solid foundation that forms the basis for sound public health policies, creation of supportive environments and the strengthening of community action. In order for research to play such a pro-active role, it must be designed and implemented with the above-described Cordilleran context in mind.



Convergence, Collaboration Networking and Community Building

Role of Research

Areas for research must be prioritized and focused according to the concrete needs of the Cordillera people.

Research must involve the Cordillerans not only as subjects but as shapers and direction-setters.

Finally research must result in concrete changes and actions which lead to a better life and health status for the Cordillera people.





1. Research Management Subcommittee
2. Ethics Subcommittee
3. Capacity Building Subcommittee
4. Research Utilization Subcommittee





Challenges

- Fostering an active sense of community;
- Sustainability of cooperation;
- Outputs of the community or network.

