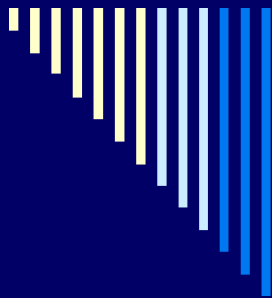


# Regional Health Research and Development Committee

**Eastern Visayas (Region 8)**

---

STRUCTURE OF THE REGIONAL HEALTH RESEARCH AND DEVELOPMENT COMMITTEE - REGION 8 (RHRDC 8)



EXECUTIVE COMMITTEE (EXECOM)

Functions:

1. Develop policies, plans and programs ( in response to the region's health research priorities) relevant to:
  - a. coordination and management of regional health R & D activities
  - b. development of health research capabilities
  - c. strengthening of health R & D information dissemination and utilization
  - d. forging of collaborative health R & D activities among regional agencies
  - e. establishing linkages with other local, national and international health-related institutions and external funding.
2. Oversee the various sub-committees; and,
3. Appropriately act on the recommendations made by the different sub-committees.

DEPARTMENT OF SCIENCE & TECHNOLOGY  
Regional Office No. 8

Functions:

1. Provide secretariat assistance to RHRDC functions;
2. Manage PCHRD funds of RHRDC; and,
3. Provide assistance for health research information dissemination.

RESEARCH MANAGEMENT  
SUBCOMMITTEE (1)

Functions:

1. Screen and evaluate health research proposals according to RHRDC priorities;
2. Identify research proposals within priority areas;
3. Monitor and evaluate existing health research projects; and,
4. Identify and facilitate endorsement of proposals to appropriate funding sources.

HEALTH RESEARCH RESOURCES  
SUBCOMMITTEE (2)

Functions:

1. Coordinate training programs for development of health research manpower;
2. Identify health research and manpower needs of the region;
3. Screen trainees/grantees of health research manpower development programs; and,
4. Monitor progress of trainees/grantees of manpower development institutional support programs.

RESEARCH INFORMATION  
SUBCOMMITTEE (3)

Functions:

1. Conduct inventory of regional research capabilities (manpower, institutions, researches & literature on regional health R & D activities);
2. Provide and disseminate health research information in the region;
3. Encourage health research information utilization; and,
4. Promote health R & D information exchange.

ETHICS REVIEW SUBCOMMITTEE (4)

Functions:

1. Evaluate health aspects of research proposals submitted to RHRDC for funding; and,
2. Monitors the implementation of approved research projects, specifically on the ethical concerns..

## RHRDC Member Agencies (Outside Metro Tacloban)

- UEP, Catarman N. Samar
- ESSU, Borongan City, E. Samar
- SSU, Catbalogan City, Samar
- NIT, Naval, Biliran
- VSU, Baybay City, Leyte
- SLSU, Sogod, So. Leyte
- SJC, Maasin City, So. Leyte





# RHRDC Member Agencies (Metro Tacloban)

- EVRMC, Tacloban City
- PIA 8, Tacloban City
- PAFP, Tacloban City
- PNA, Tacloban City
- UPTC, Tacloban City
- St. Scholastica
- Divine Word Hospital
- DILG 8, Tacloban City
- Holy Infant College
- Leyte-Samar Pharma
- CHED
- RTRMF
- LMS, Tacloban City
- DepEd 8
- DOH 8
- DOST 8
- NEDA 8
- UPMSHS

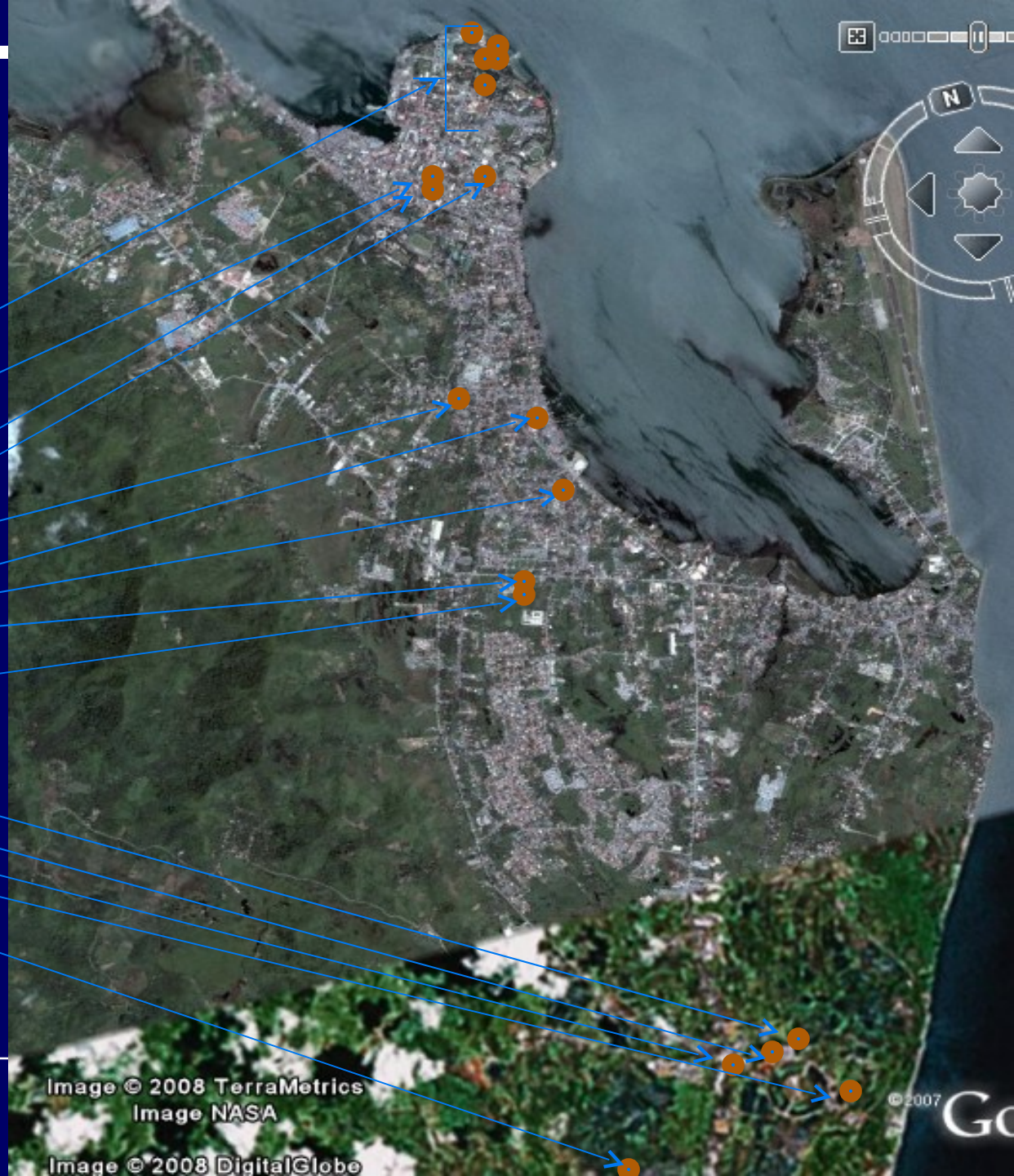


Image © 2008 TerraMetrics  
Image NASA

Image © 2008 DigitalGlobe

© 2007

Go



---

# Profile of RHRDC 8 Members

- GOs – 7 (includes a DOH-Retained Hospital)
  - Academe:
    - SUCs – 7
    - UP Campus - 2
    - Private Schools – 4
    - Technical Schools – 2
  - NGOs/Professional Organizations – 6
  - Private Hospitals - 1
-

---



# Convergence Strategies

- Institutional Capacity Enhancement
  - Human Resource Capability Building
  - Information and Knowledge Translation
  - Networking
  - Research Management
-



---

## A. Institutional Capacity Building

- Sharing of Resources: laboratory and computer equipments, laboratory materials & supplies
  - Counterpart grants for research studies
  - Cost of trainings
  - Cost for research operations and management
-



---

## B. Human Resource Capability Enhancement

- Post-Graduate Studies: Epidemiology, Biostatistics, Mathematics, Microbiology;
  - Short Course Trainings: Basic Research Methodologies, Health Systems Research, Data Analysis, Technical Report Writing, Meta-Analysis, Health Economics, Medical Anthropology, Ethics in Research
  - Twinning: Main campus with its satellite campus; SUC with a Private School
  - Mentoring: Research Coordinators
  - Consultations: R & D Coordinators
-





---

## C. Information Dissemination & Knowledge Translation

- Print: RHRDC 8 Newsletter; Journals
  - Radio: Interviews
  - Research Forum
  - Internet: EVIPNET & RHRDC 8 Website
-



---

## D. Networking

- Regional: R & D Coordinators; Research Units of SUCS
  - Zonal: Research Priority Setting; Sharing of Expertise
  - National: Research Grants; Expertise
  - International: Global Research Updates; Research Grants & Fellowship
-

---



## E. Research Management

- Agency Collaboration: DOH-EV and DOST 8
  - Representation in the Social Development Committee of the Regional Development Council
-

---

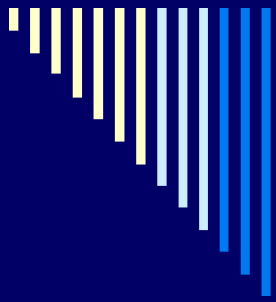


# RHRDC 8 Performance (1982 to 2007 & Qtr 1 - 3 2008)

A HARE

A TURTLE

---



**Thank you!**

