

MAPPING OF TRADITIONAL MEDICINAL PLANTS IN PUGO, LA UNION

By
Flordiliza B. Dalumay
DMMMSU-SLUC



Background of the Study

- Various uses of plants
- Mass processing of plants
- Documentation of medicinal plants
- Conservation and production



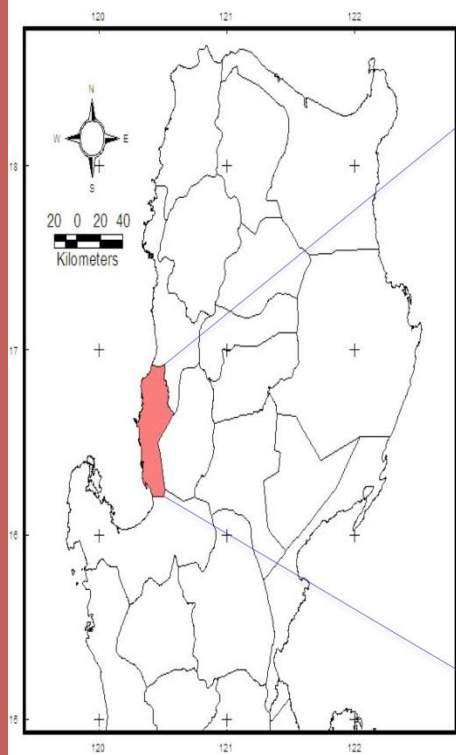
Objectives

- To determine the species of traditional medicinal plants, including local and scientific names, that thrive under different land use of the municipality of Pugo;
- To determine the physical environment of traditional medicinal plants;
- To determine the relationship of plant density and physical environment;
- To develop mapping technologies for different topographies in Region 1;
- To develop a GIS map of traditional medicinal plants in the municipality of Pugo; and

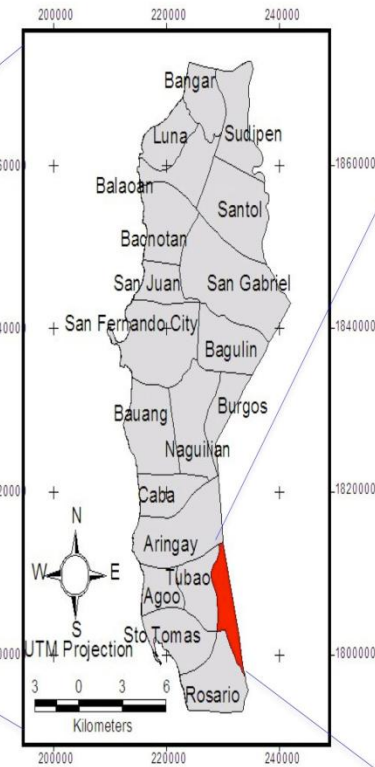


Study site

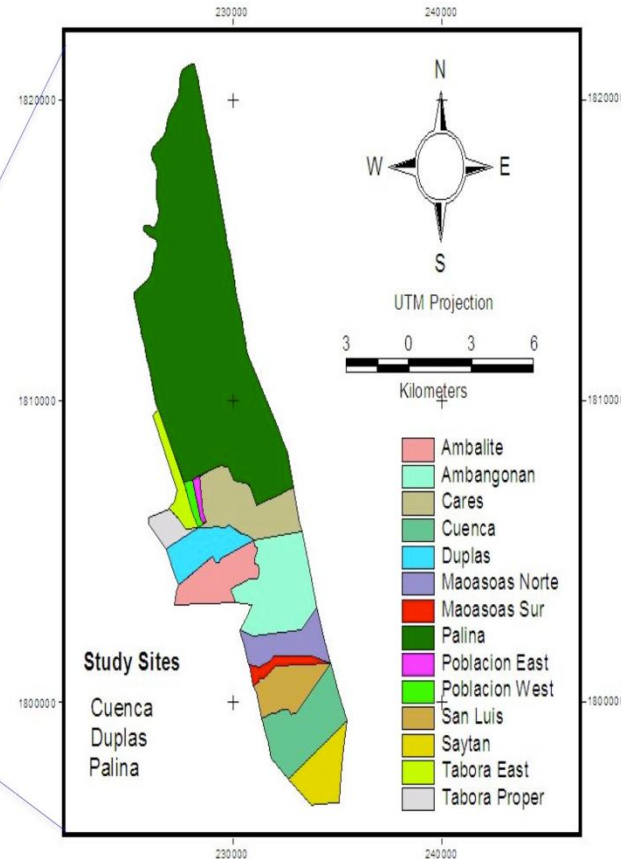
a) Map of Northern Luzon, Philippines



b) Map of La Union



c) Map of Pugo, La Union



Methodology

The Study Design

Descriptive-survey/ correlational

=plant density

=soil characteristics

(pH, OM,P,K)

=physical environment

(elevation, rainfall, temperature)

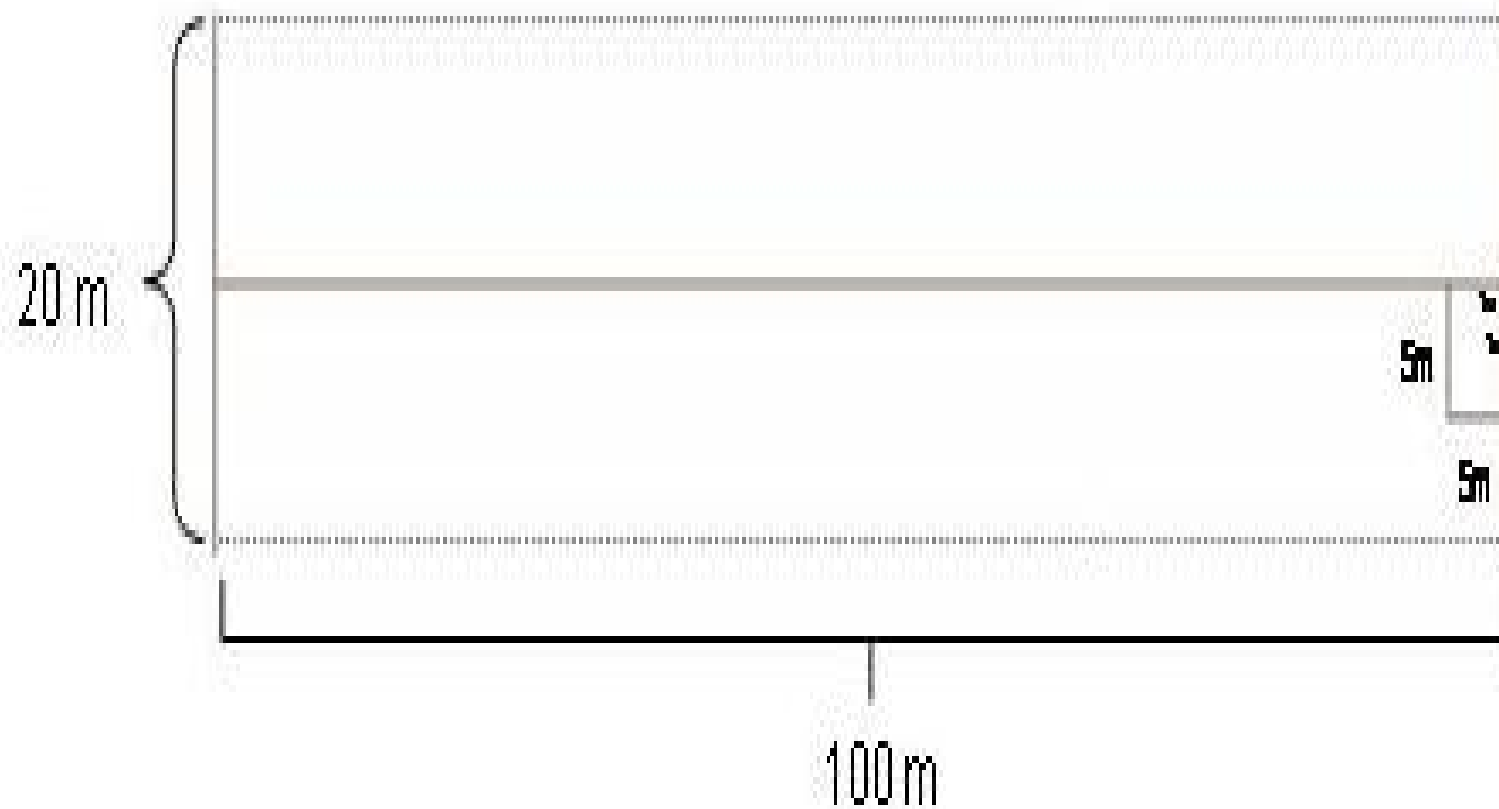


Methodology ò

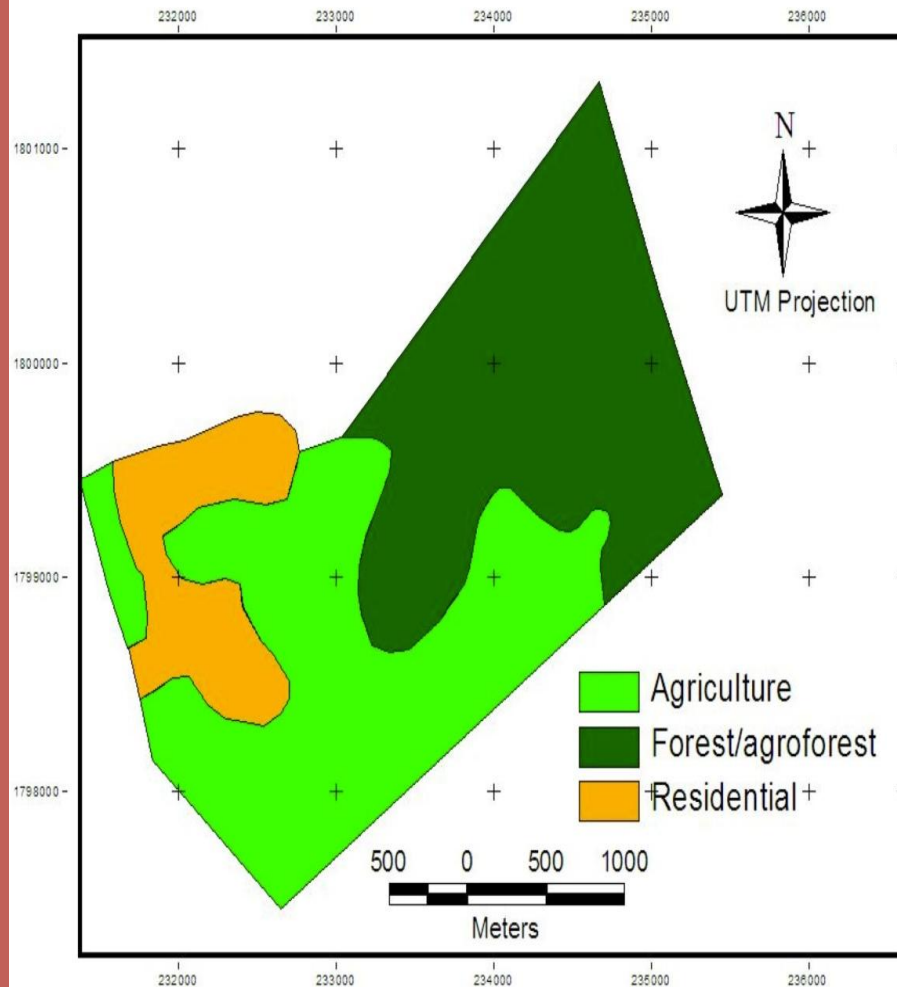
- Sampling (20%)
- = three land-use type (residential, agricultural, agro forest/ forest)
- Residential = questionnaire, interview
- Agricultural /Agro forest/Forest = Strip Cruise Method



STRIP CRUISE METHOD



GIS MAP



Relevant Information:

Area (has.)

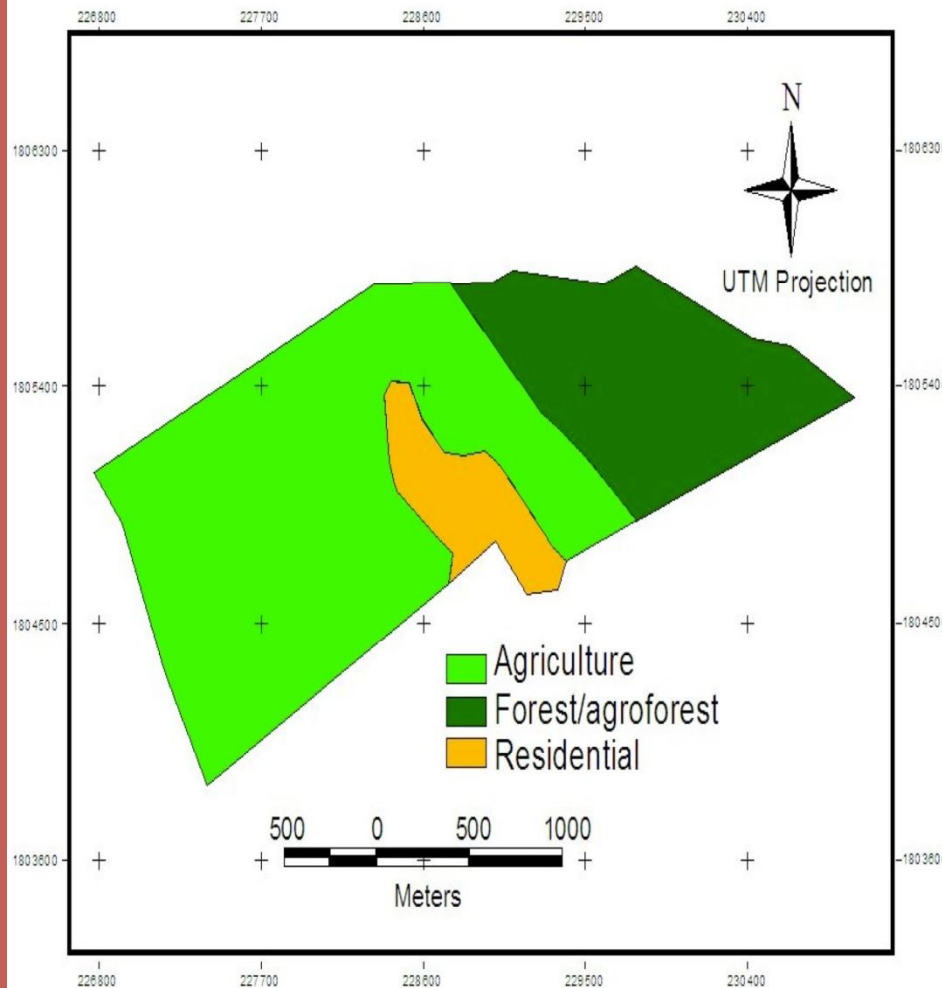
Agriculture	228.33
Forest (including agroforest)	228.24
Residential	68.42

Top 5 plant species found in the three land uses of Barangay Cuenca, Pugo, La Union based on plant density

Agriculture	Forest (including agroforest)	Residential
1. Penga-penga	1. Ipil-ipil	1. Pinya
2. Makahiya	2. Aludeg	2. Makahiya
3. Dadayem	3. Mahogany	3. Bayabas
4. Melon daga	4. Sablot	4. Dila-dila
5. Takip kuhol	5. Bignai-pugo	5. Kalamansi

GIS MAP

Relevant Information:



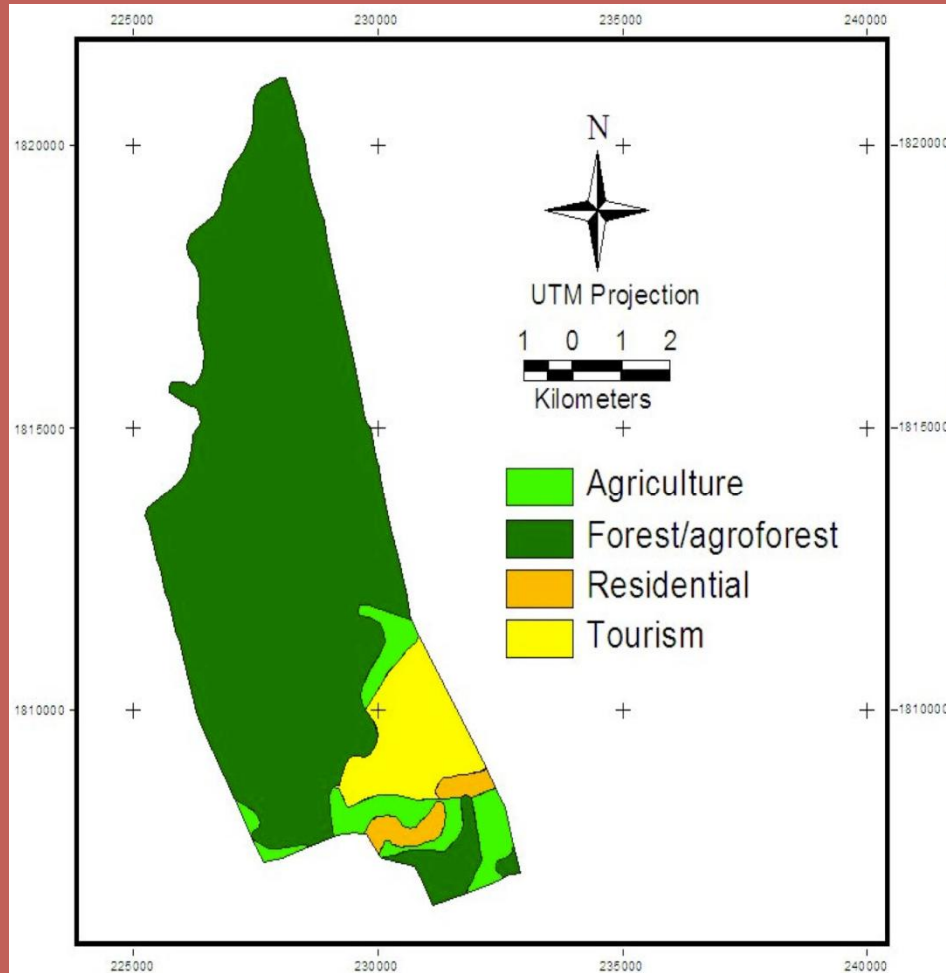
Area (has.)

Agriculture	176.17
Forest (including agroforest)	75.58
Residential	23.25

Top 5 plant species found in the three land uses of Barangay Duplas, Pugo, Ia Union based on plant density

Agriculture	Forest (including agroforest)	Residential
1. Banana	1. Mahogany	1. Guyabano
2. Ipil-ipil	2. Alibangbang	2. Manga
3. Makahiya	3. Narra	3. Niyog
4. Dila-dila	4. Sablot	4. Mahogany
5. Hagonoy	5. Aludeg	5. Bayabas

GIS MAP



Relevant Information:

Area (has.)

Agriculture	308.09
Forest (including agroforest)	4354.83
Residential	116.07
(Tourism)	(464.26)

Top 5 plant species found in the three land uses of Barangay Palina, Pugo, La Union based on plant density

Agriculture	Forest (including agroforest)	Residential
1. Mahogany	1. Ipil-ipil	1. Pinya
2. Mirasol	2. Raya-raya	2. Lantana
3. Hagonoy	3. Tebbeg	3. Banana
4. Bayabas	4. Mahogany	4. Papaya
5. Makahiya	5. Hagonoy	5. Kalunay

CONCLUSIONS

- The municipality of Pugo has diverse medicinal plants across the different land - use types of Pugo, La Union.
- There exists no significant relationship between density of medicinal plants to that of elevation, temperature, rainfall, and soil organic matter.



RECOMMENDATIONS

The residents of the municipality of Pugo should continue to plant, cultivate and preserve medicinal plants not only in their vicinity but also in the agricultural and forest/agro forest land use types in order to increase more the density of the medicinal plants.



- Validate the technology/ procedure in mapping medicinal plants in agricultural and agro-forest/forest land use types.
- Authentication of medicinal plants should be conducted for validation purposes.



Future researches on medicinal plants should focus on one species to be properly analyzed and map the spatial distribution using the updated instrument of Geographic Information System.



Thank you.....

