

Parallel Session on Governance Support Systems

**Reaction by
Patricia L. Lontoc, DPA**

Professor, Asian Institute of Management

Board Director, Philippine Business Leaders Forum (EIU affiliate)

Former Alternate Board Director, Medicines Transparency Alliance-
Philippines (META), 2008-2009

Former Secretary-General, Social Reform Agenda, 1995

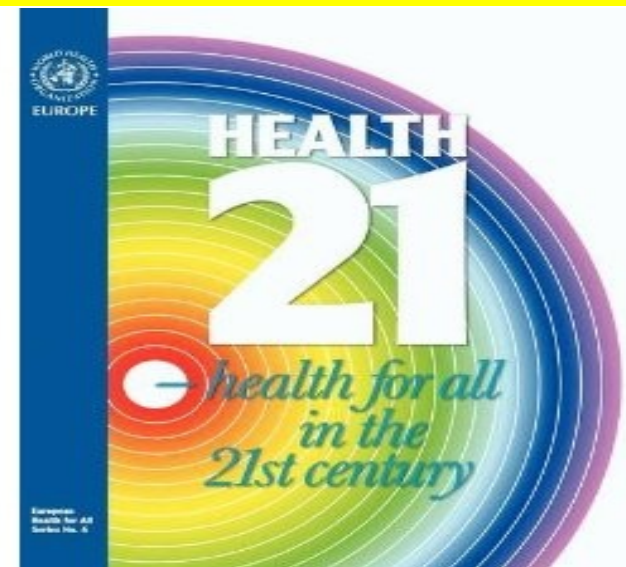
Strategic Conclusion: Politics of People's Health

CAPUNO, ET AL., TERM LIMITS, YARDSTICK COMPETITION AND LOCAL GOVERNMENT PROVISION OF HEALTH INSURANCE

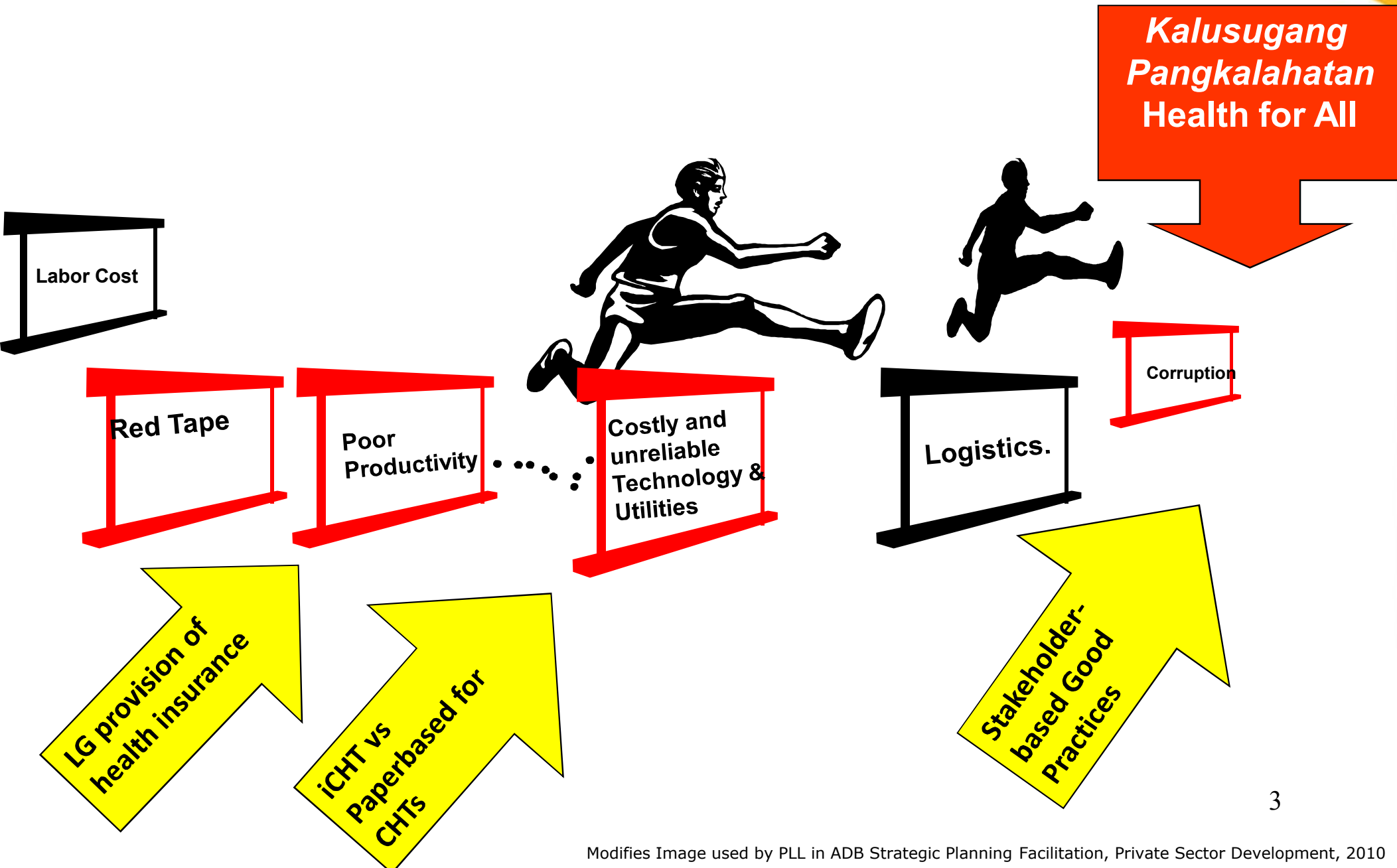
- LGU decisions - sensitive to electoral incentives
 - **LCEs who face term limits increase SP coverage**...but not effect on the provision of other public services
 - **SP coverage rate increases as the average SP coverage rate of other LGUs in province increase**
- Politics could be good for health
 - Promoting yardstick **competition among LGUs/LCEs** can promote **universal health insurance**

LAUDENCIA, COST-BENEFIT ANALYSIS OF ICHT VS. PAPER FORMS

- For Community Health Teams, using iCHT can **save as much as Php 2M annually for every 10,000 families**; may be used to cover 2,500 more families
- Cost-Benefit Ratio—1.23:1

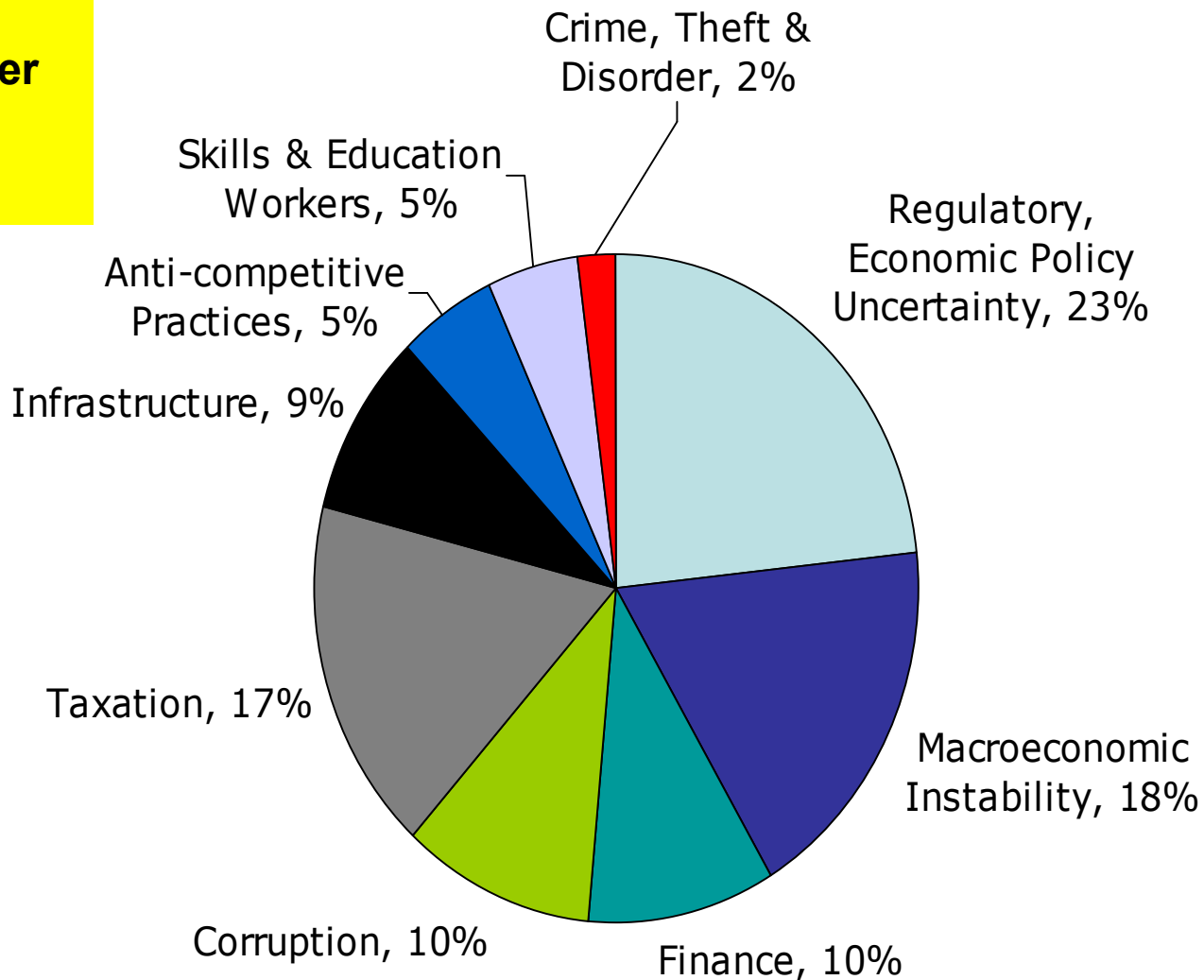


Racing to Kalusugang Pangkalahatan/Health For All

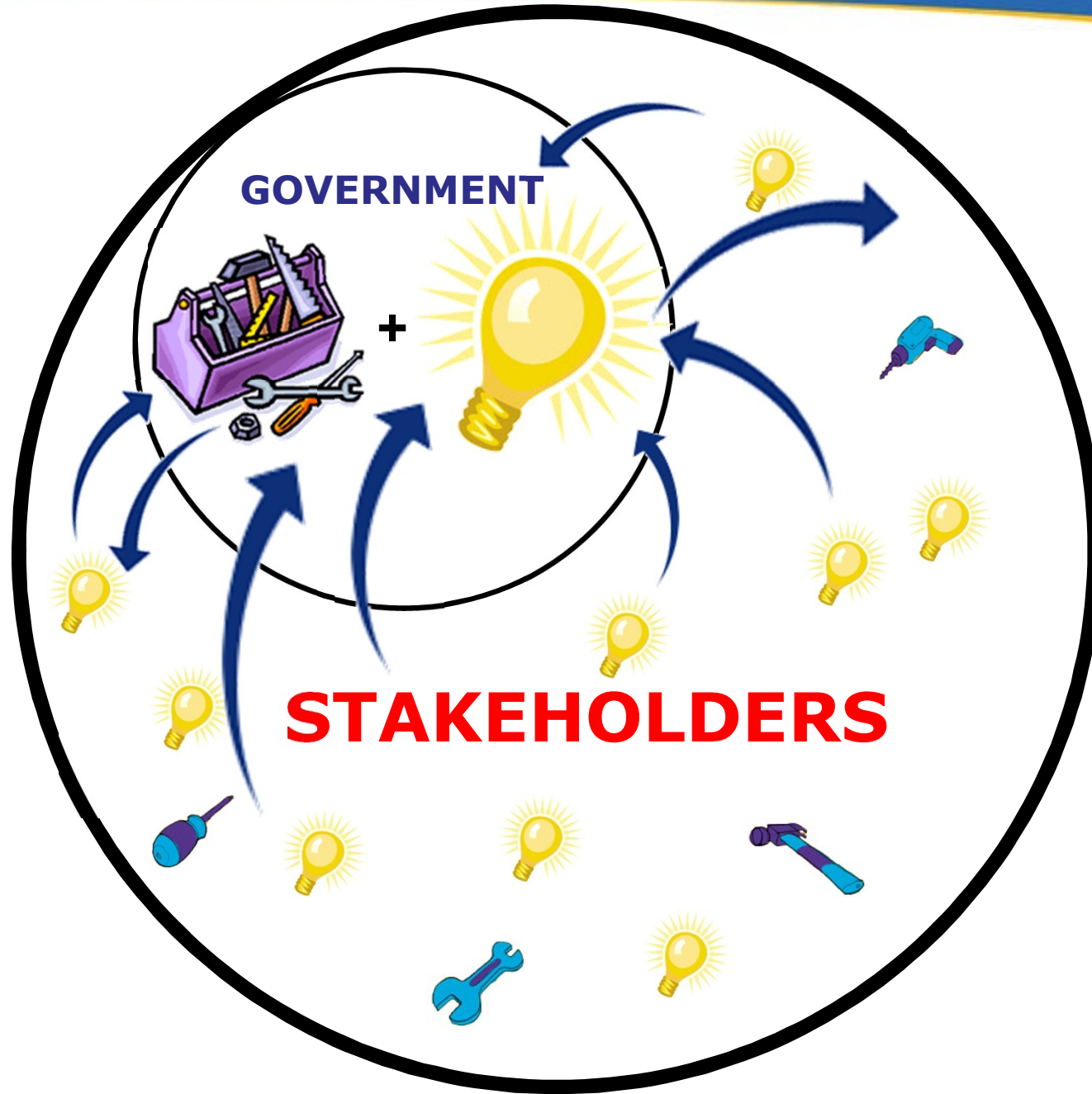


Circle of binding constraints

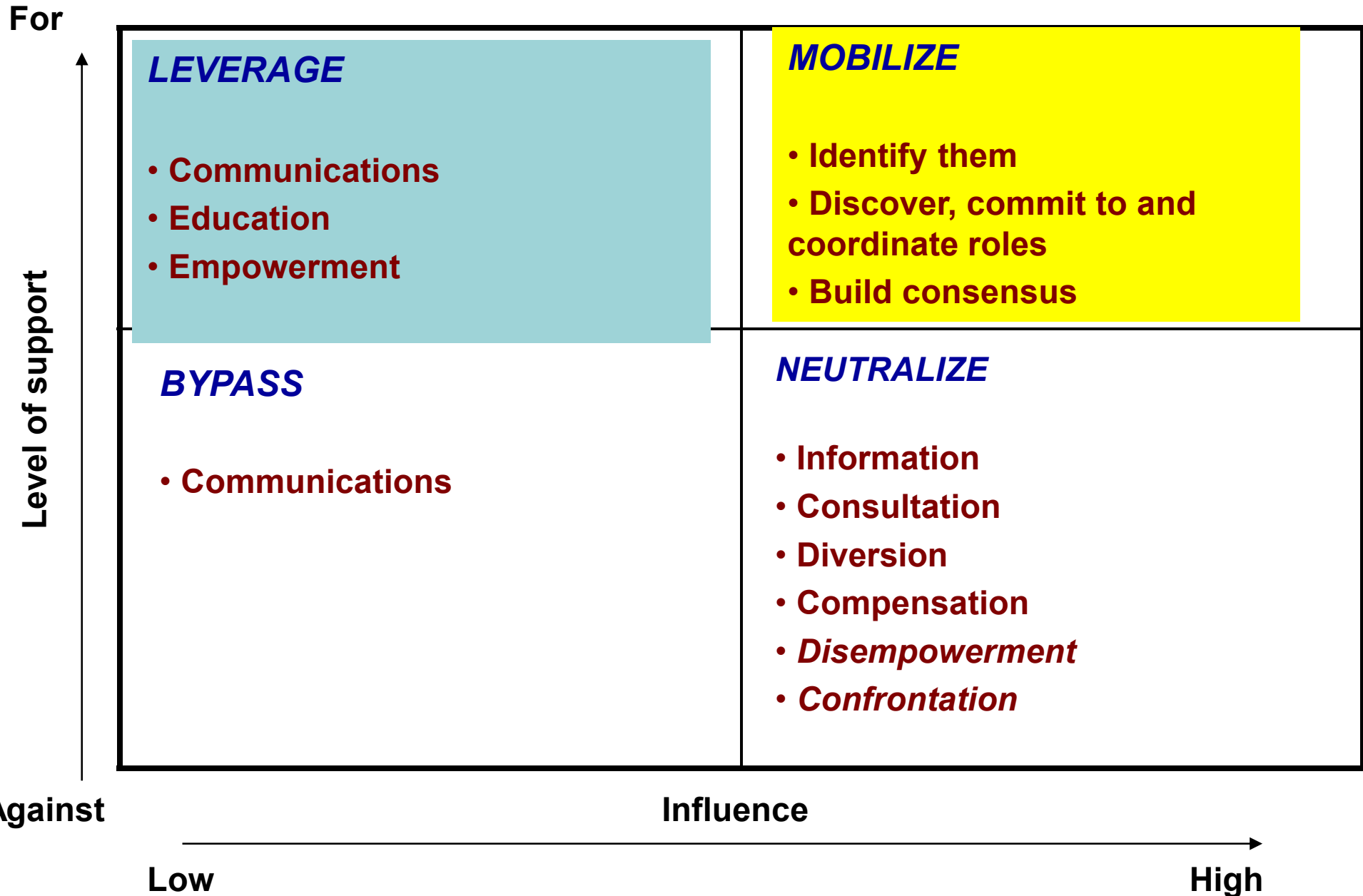
Leading constraints identified by over 24,000 firms in 58 countries



Sustaining reforms, engaging stakeholders: Tools, Ideas



Stakeholder Management as Governance Support



Shelter from the Rain: Public-Private Dialogue

